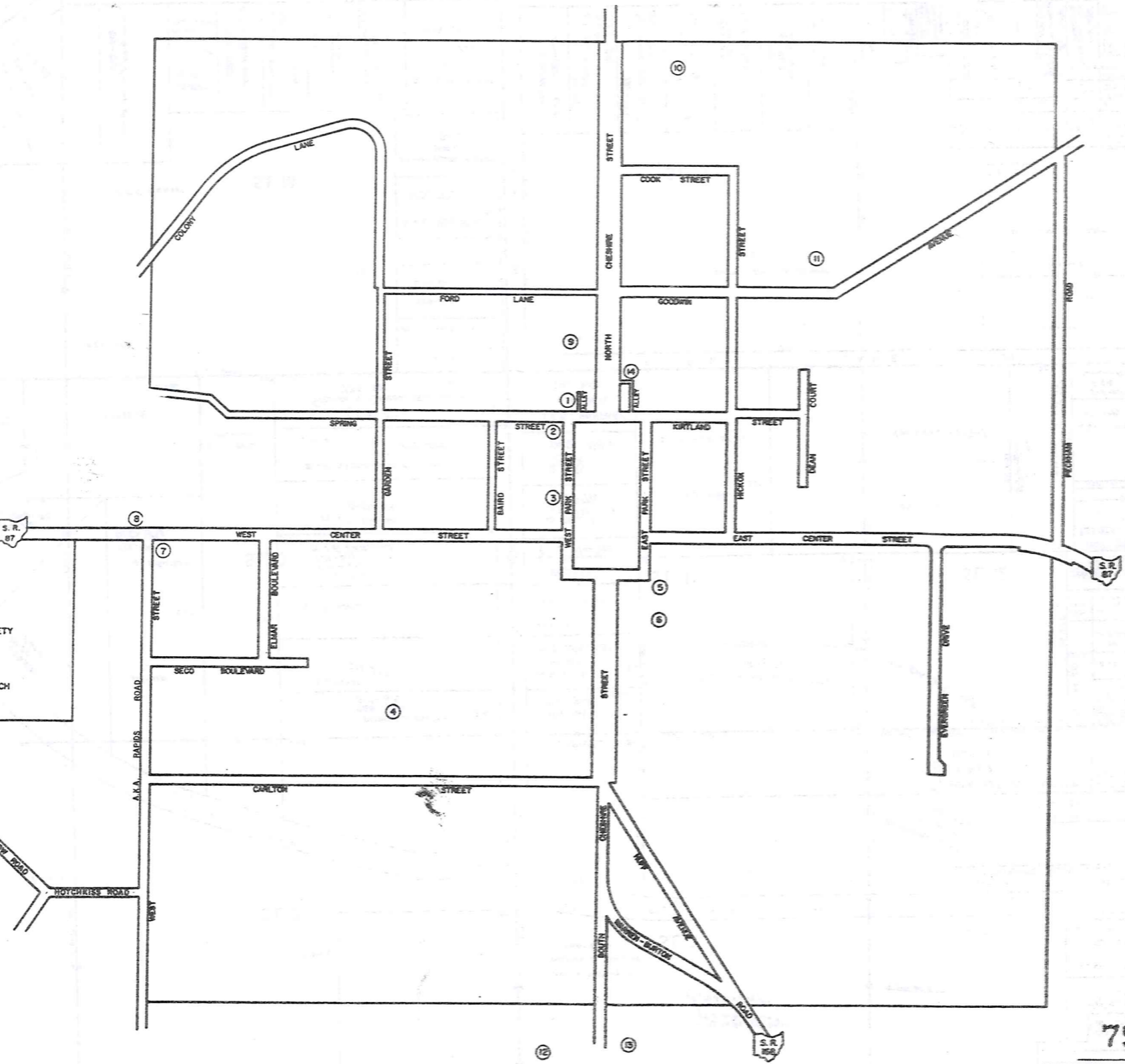
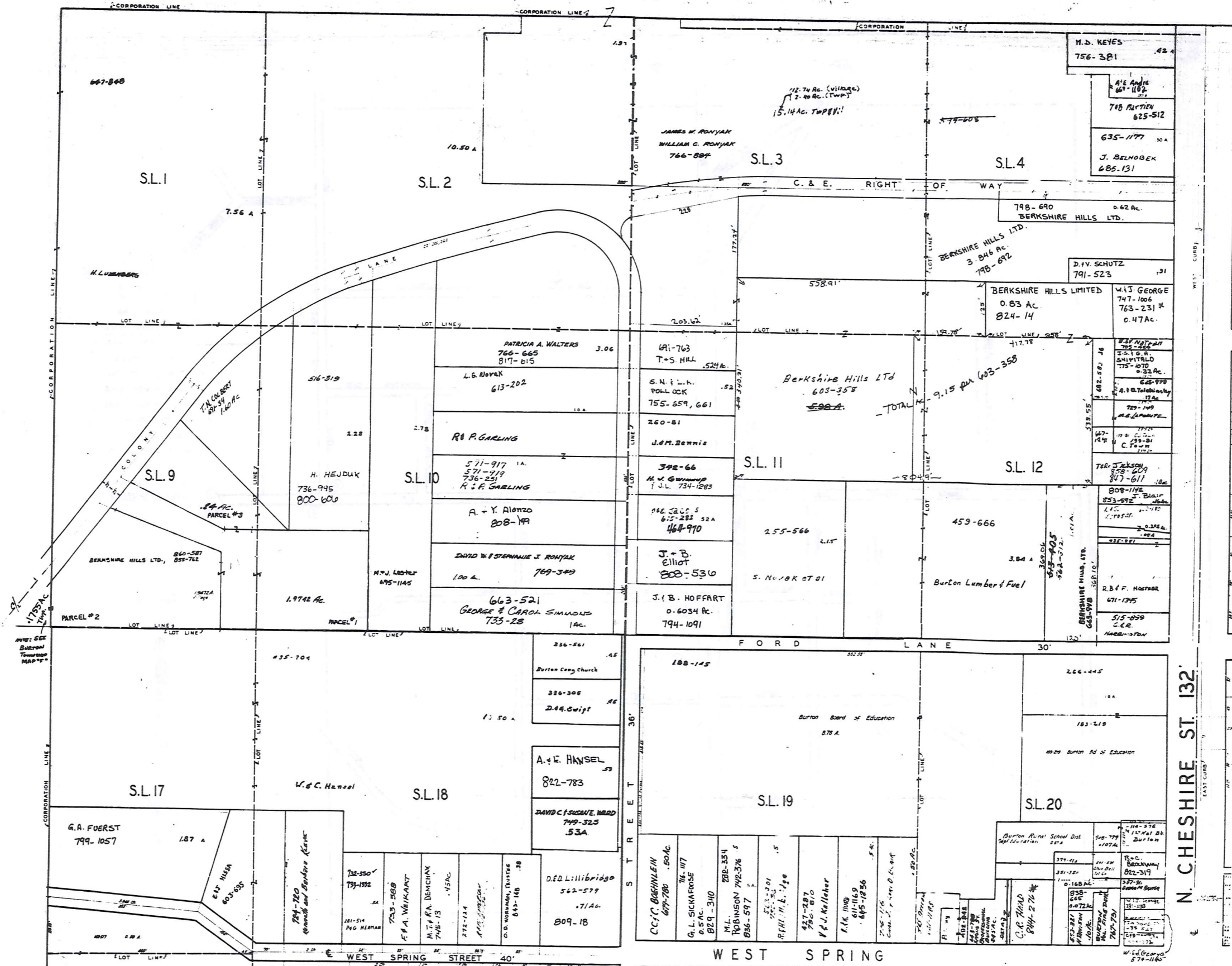


MAP OF BURTON VILLAGE

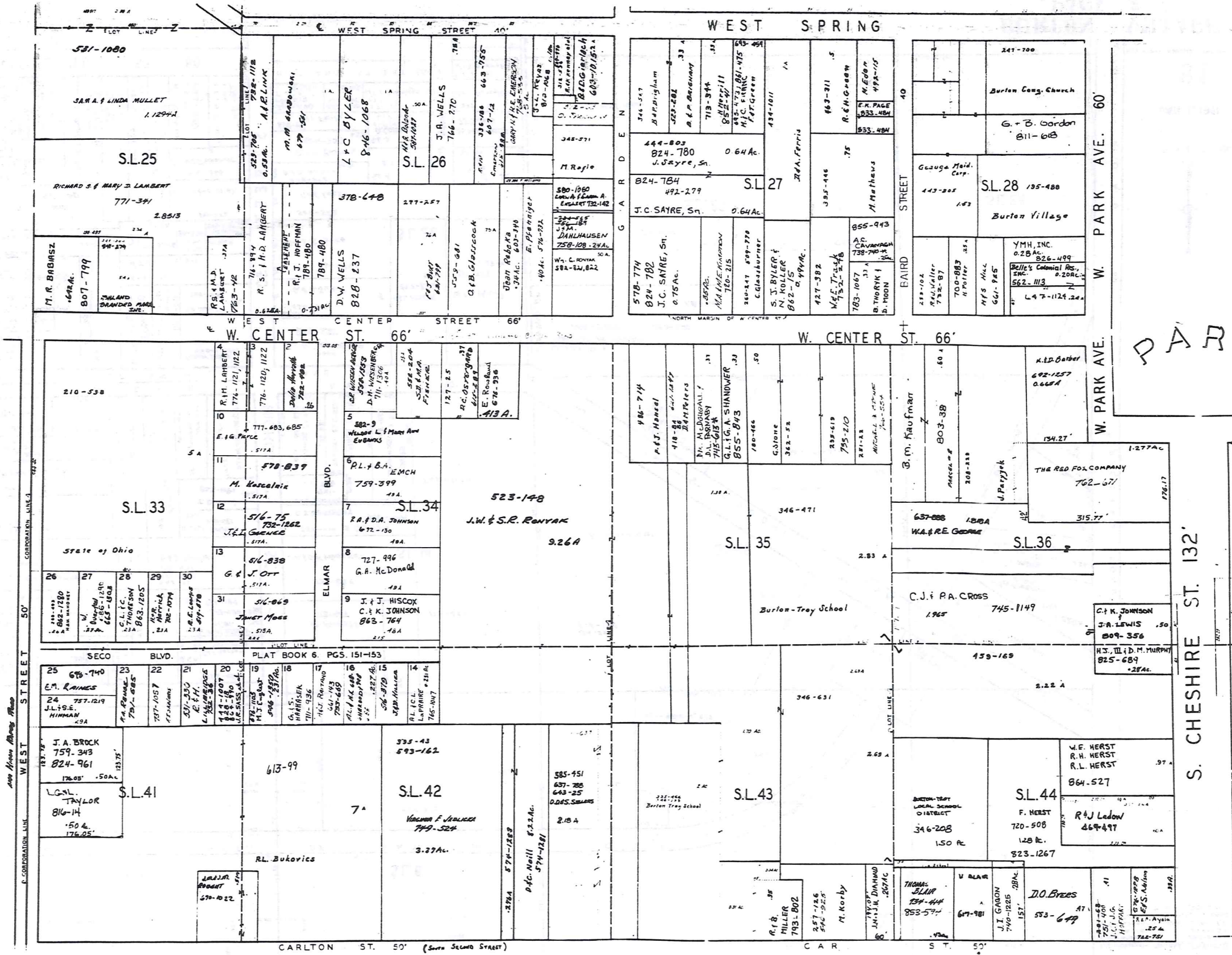


- POINTS OF INTEREST
- ① BURTON VOL. FIRE DEPT.
 - ② BURTON CONG. CHURCH
 - ③ BURTON PUBLIC LIBRARY
 - ④ BURTON ELEM. SCHOOL
 - ⑤ GEALGA HISTORICAL SOCIETY
 - ⑥ FIRST LUTHERN CHURCH
 - ⑦ STATE HIGHWAY DEPT.
 - ⑧ CHRISTIAN SCIENCE CHURCH
 - ⑨ BERKSHIRE HIGH SCHOOL
 - ⑩ GEALGA COUNTY FAIRGROUNDS
 - ⑪ BURTON CEMETARY
 - ⑫ LOWER CEMETARY
 - ⑬ VILLAGE SEWAGE TREATMENT PLANT
 - ⑭ UNITED STATES POST OFFICE

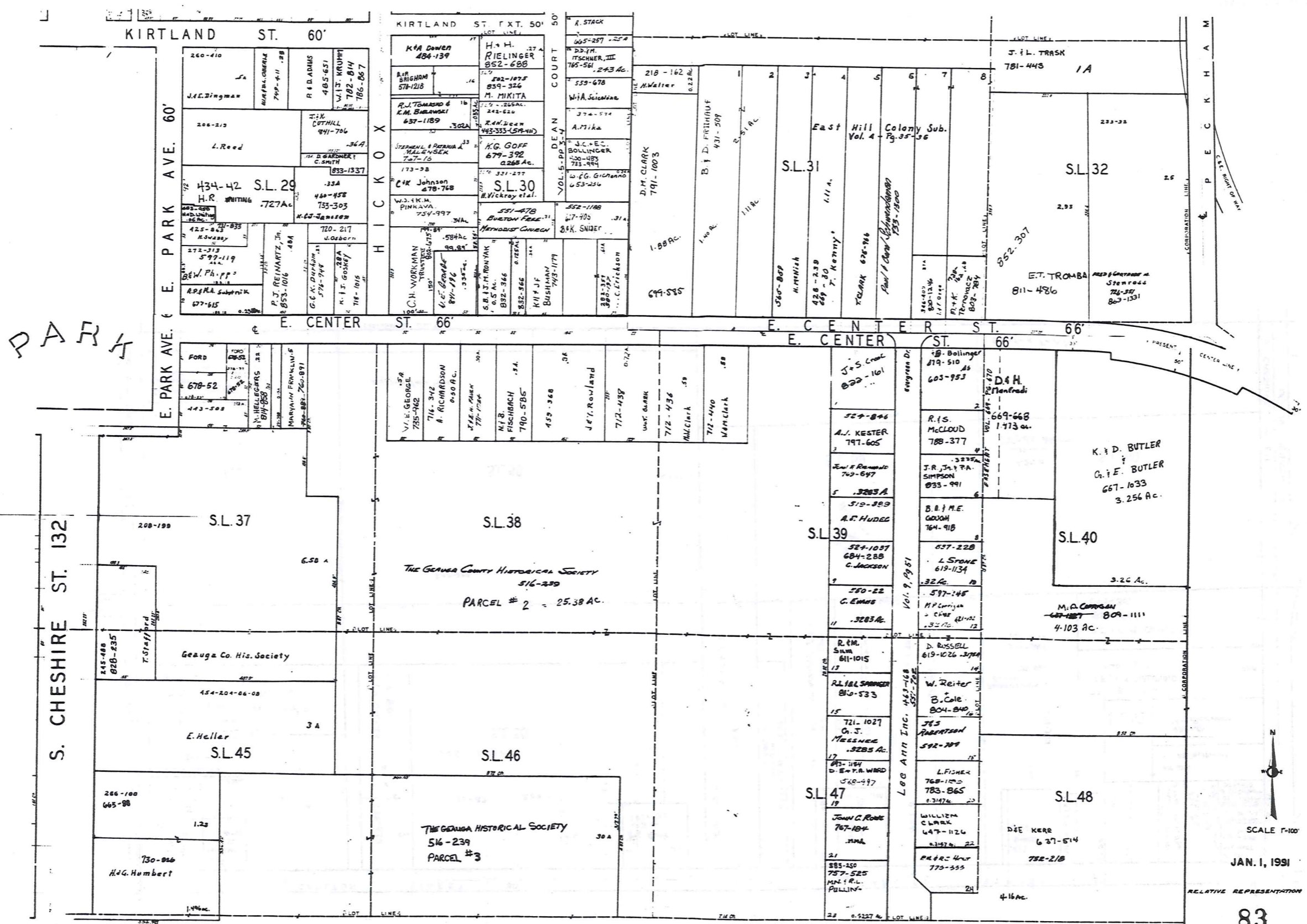




SCALE: 1" = 100'
 JAN. 1, 1991
 RELATIVE REPRESENTATION



JAN. 1, 1991



PARK

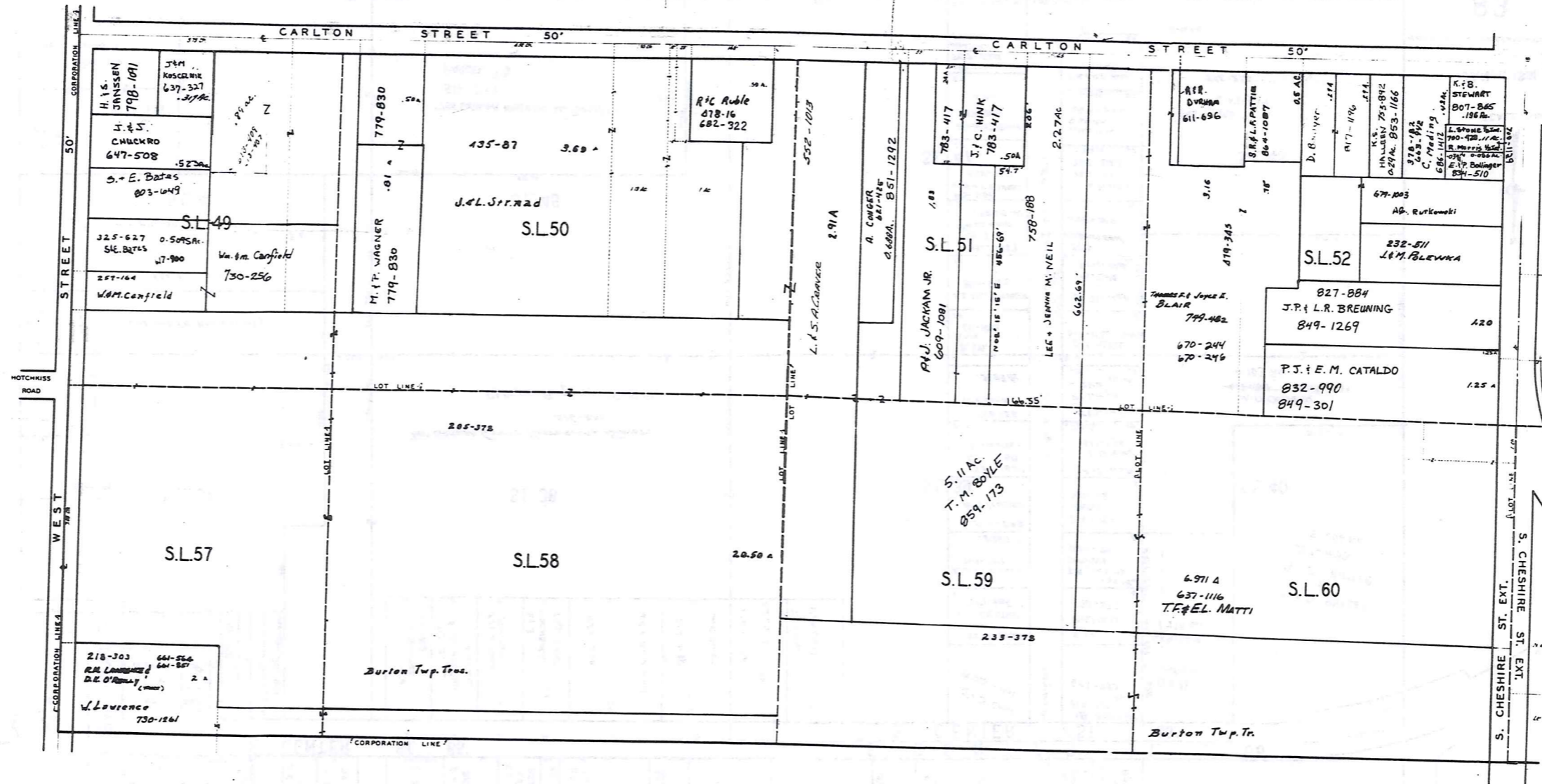


SCALE 1"=100'

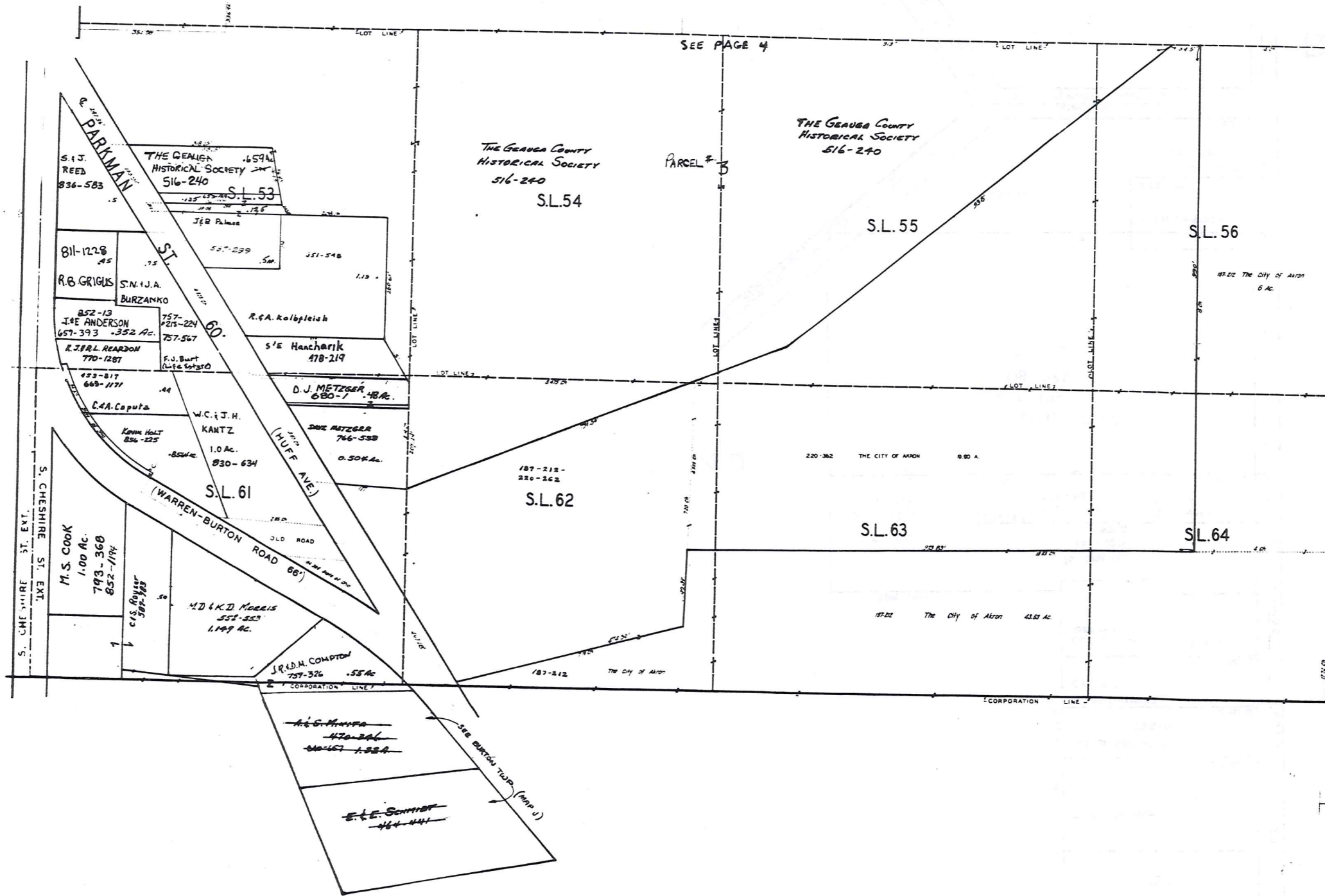
JAN. 1, 1991

RELATIVE REPRESENTATION

83



JAN. 1, 1991



SEE PAGE 4

PARCEL # 5

THE GAUGA COUNTY HISTORICAL SOCIETY
516-240
S.L.54

THE GAUGA COUNTY HISTORICAL SOCIETY
516-240

S.L.55

S.L.56

THE CITY OF AKRON
6 AC.

S.I.J. REED
836-583
S.L.53

811-1228
R.B. GRIGGS

852-13
J.E. ANDERSON
657-393

R.J.R.L. REARDON
770-1287

422-817
669-171
E.A. CAPUTA

757-224
757-567
W.C. & J.H. KANTZ

1.0 AC.
830-634

1.00 AC.
793-368
M.S. COOK

1.149 AC.
M.D. & K.D. MORRIS

757-326
J.R. & M. COMPTON

470-341
464-441
E.E. SCHMITT

S.L.60

S.L.61

S.L.62

S.L.63

S.L.64

220-382 THE CITY OF AKRON 8.80 AC.

THE CITY OF AKRON 43.83 AC.

RELATIVE REPRESENTATION



SCALE 1"=100'

JAN. 1, 1991

E KINSMAN ROAD 66'

D.S. LITTLE &
E.R. BOGIELSKI
758-16
2 Ac.

2 Ac.
550-840
E. LARSON
480-500
0.33 Ac.

D.S. LITTLE &
E.R. BOGIELSKI
738-224

P.O. RZESZOTARSKI
742-440
1.67 Ac.

J.A.D. BAUMGARTNER
765-158
0.87 Ac.

D. & K. NIMIETZ
633-915
0.864 Ac.

T. & C. SMITH
853-647
1.212 Ac.

CORP. LINE
1.52 Ac.
E. CHITTLE
778-1126
0.78

B. SMERGLIA
782-427
1.571 Ac.
556-341
E. CHITTLE
778-1126
0.78

R.C. AYERS
850-613
0.51 Ac.

E. CHITTLE
479-306
778-1123
9.31 Ac.
778-1123

T. & N. HERRICK
0.75 Ac.
663-139
D.J. & D. CHERNI
824-549
0.67 Ac.

CORP. LINE
E HOTCHKISS ROAD 60'

44

BIGELOW (MILL) ROAD
60'

E HOTCHKISS ROAD
60'

50' RAPIDS ROAD



SCALE 1"=100'

JAN. 1, 1995

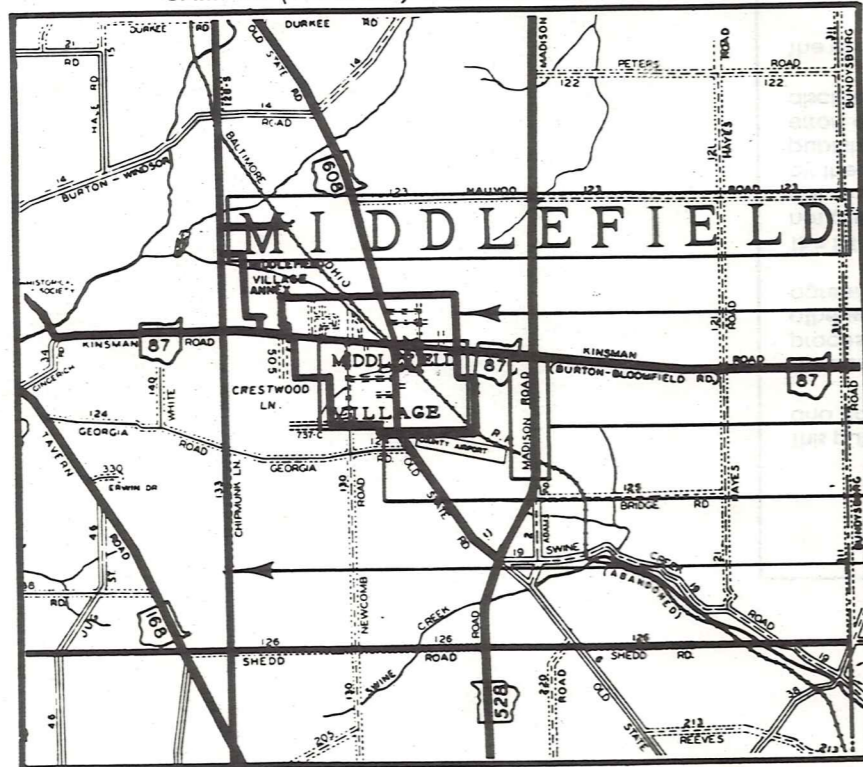
RELATIVE REPRESENTATION

BURTON
VILLAGE
PAGE 7

Explanation and Use Sheet for Geauga County, Ohio

A

SAMPLE (PARTIAL) COUNTY INDEX MAP



Tract Lot Number

Acreage

Township Name

Village Boundary

Street Name

Village Name

Township Boundary

Owners Name

Denotes Continuous Ownership

Deed Book & Page

Map Page Number

Township Name

Village Name

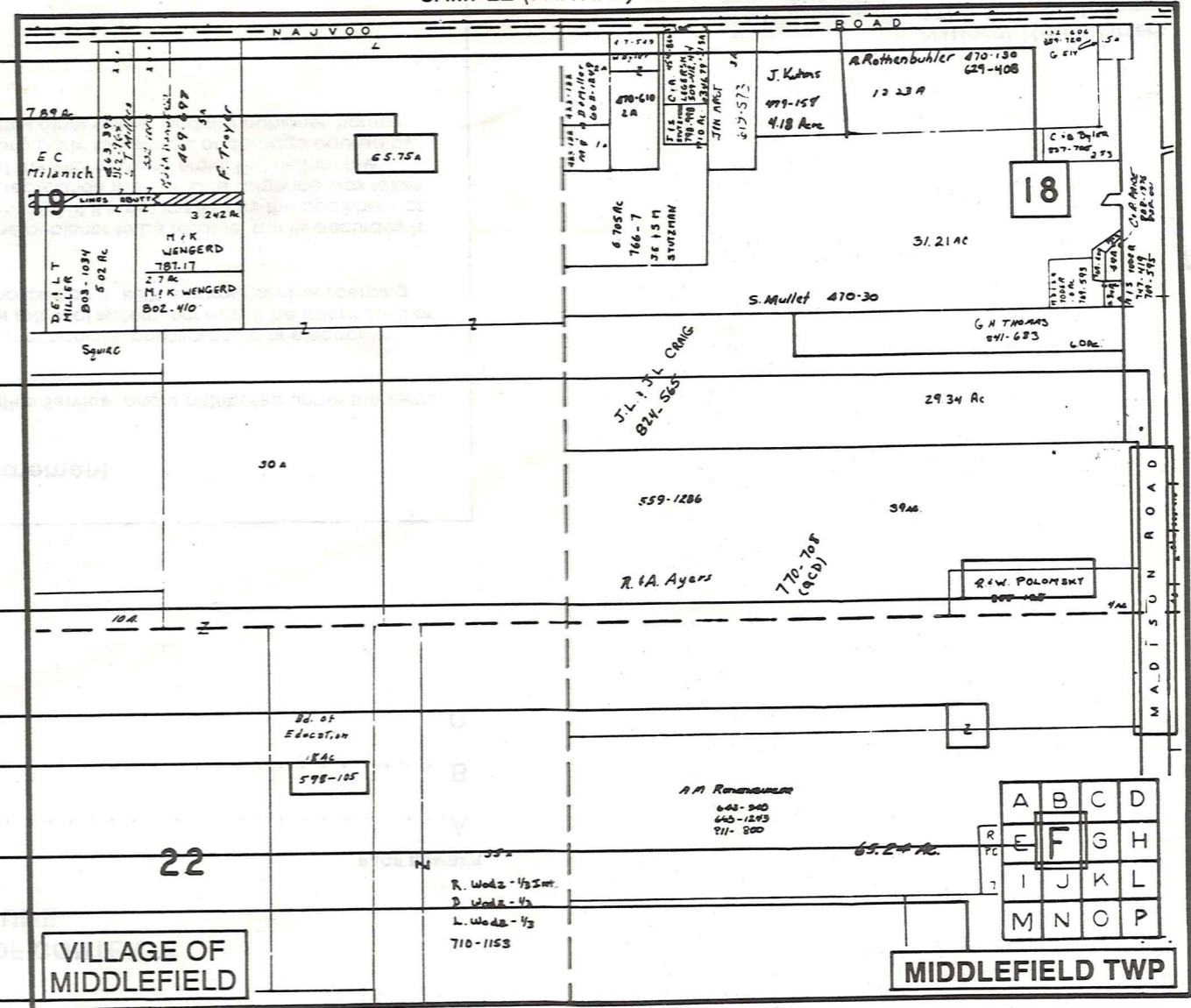
Village Boundary

Street Name

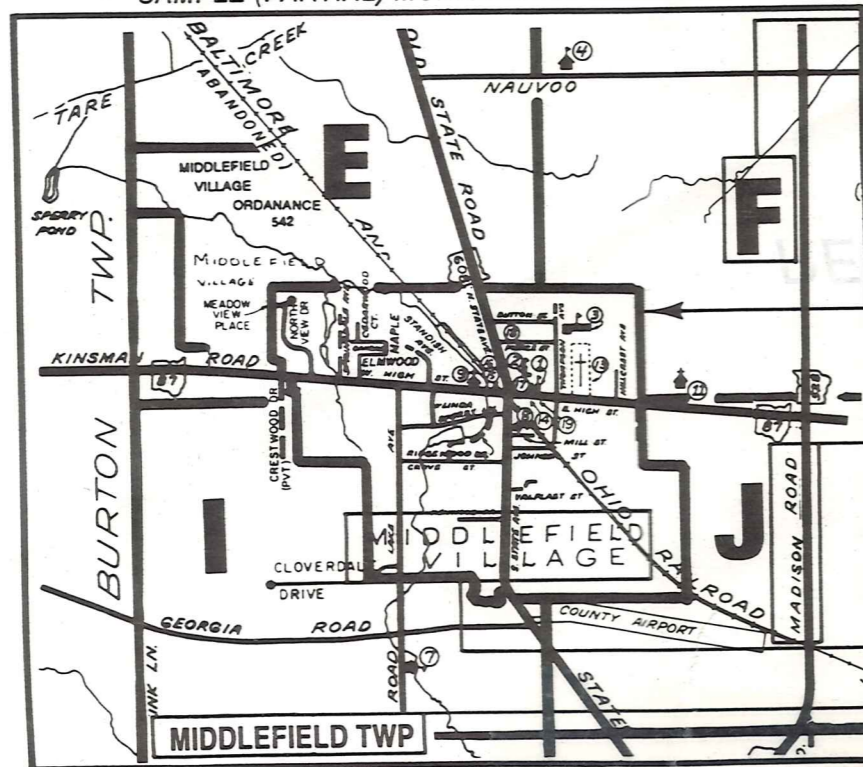
Village Name

Township Name

SAMPLE (PARTIAL) MAP PAGE



SAMPLE (PARTIAL) MUNICIPALITY INDEX MAP



USE OF THE MAP VOLUME

- LOCATE THE GENERAL AREA OF INTEREST ON THE COUNTY INDEX MAP AND NOTE THE MUNICIPALITY NAME (TOWNSHIP OR VILLAGE).
 - REFER TO THE TABLE OF CONTENTS AND NOTE THE BEGINNING ATLAS PAGE NUMBER FOR THE MUNICIPALITY OF INTEREST.
 - TURN TO THE PAGE INDICATED, ON THIS PAGE WILL APPEAR AN INDEX MAP FOR THAT MUNICIPALITY.
 - LOCATE THE GENERAL AREA OF INTEREST AND NOTE THE MAP PAGE NUMBER. THIS MAY BE EITHER A LETTER OR A NUMBER.
 - MAP PAGES ARE IN ALPHABETICAL (OR NUMERICAL) SEQUENCE FOLLOWING THE MUNICIPALITY INDEX MAP. FOLLOW SEQUENCE TO THE MAP PAGE INDICATED.
 - LOCATE SPECIFIC PARCEL OF INTEREST AND NOTE THE DESIRED INFORMATION.
- NOTE: ON SOME MAPS YOU MAY BE REFERRED TO A DETAIL SHEET SHOWING AN ENLARGEMENT OF THE AREA. THESE MAPS ARE FOUND AT THE END OF THE REGULAR MAP PAGES IN EACH MUNICIPALITY IN EITHER ALPHABETICAL OR NUMERICAL SEQUENCE.
- NOTE: CHARDON VILLAGE HAS TITLE SHEETS. TO LOCATE OWNERS NAME, NOTE THE PARCEL NUMBER, REFER TO THE TITLE PAGE FOLLOWING THE MAP OF INTEREST, FOLLOW NUMERICAL SEQUENCE TO THE PARCEL NUMBER OF INTEREST AND NOTE THE DESIRED INFORMATION. IN ALL OTHER MUNICIPALITIES THE OWNERS NAME APPEARS ON THE MAP PAGE.